



KASSEL-DANE SISTER COUNTY PARTNERSHIP

Since 2007



Parthenon of Books by Mata Minujín, *documenta 14*, 2017 created of 170 banned book titles, Friedrichsplatz Park, Kassel

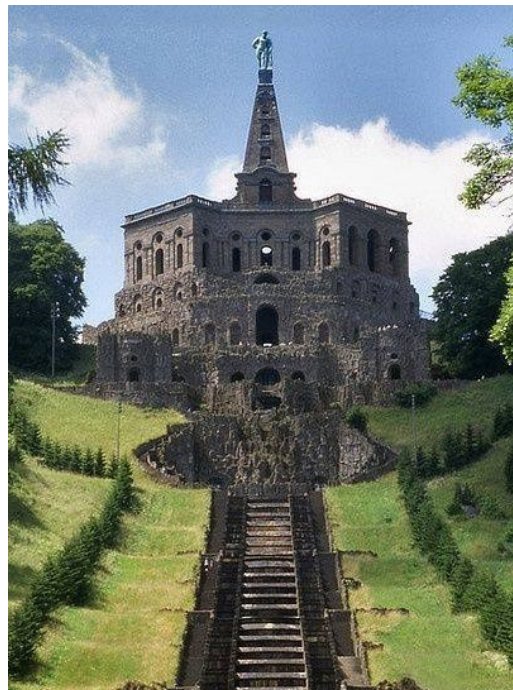


The Edgar Knecht Trio

Rolf Denecke, Edgar Knecht, Tobias Schulte



Ancora String Quartet. From left: Wes Luke, Robin Ryan, Marika Fischer Hoyt, Benjamin Whitcomb



Hercules Monument, Bergpark Wilhelmshöhe, Kassel



Dane County and Madison commemorate German Unification Day and German-American Friendship Day, Oct. 2016



Jennika Bastian, a participant in EUARCA+, 2017, Kassel



Sun Prairie High School jazz ensemble clinic with The Edgar Knecht Trio, Oct. 2016, Sun Prairie



Mario Kratsch, Vice President, German American Chamber of Commerce of Midwest, Inc.

About the partnership

In 2007 Dane County entered into a cooperative agreement with Landkreis Kassel, Hessen, Germany to form a sister county relationship. The purpose of the agreement is to exchange ideas and build economic partnerships regarding:

- Renewable energy
- Regional transportation systems
- Workforce training and continuing education
- Cultural exchanges



Regional transportation systems

About Kassel, Germany

Landkreis Kassel, a county with a population of approximately 236,000, has a regional transport system, is home to a university and the Institute for Solar Energy Technologies. The area hosts a technology-based economy, particularly traffic, logistics, and renewable energy. Its main industries are systems technology for photovoltaics, the manufacturers of train engines, and automotive factories for Volkswagen and Daimler-Chrysler.

In the last 12 years, both Landkreis Kassel and Dane County have remained committed to the goals that were set forth in the 2007 cooperative agreement as demonstrated by multiple exchanges between the partners.



Renewable energy



Landkreis Kassel

2007

A delegation from Dane County went to Kassel to experience and learn about Kassel's commuter rail structure, solar energy initiatives, and the international *documenta* art festival.



Dane County Delegation to Kassel. From left: Dane County Board Supervisor Chuck Erickson, Dane County Board Chair Scott McDonnell, Landrat (Kassel County Executive) Uwe Schmidt, Dane County Board Supervisor Mark Opitz, Middleton and Dane County Supervisor Donna Vogel

2008

Representatives from Landkreis Kassel came to Dane County to discuss water resource management, visit agri-businesses, tour an organic farm, attend a performance, as well a Madison Mallards baseball game.

2010

Landkreis Kassel's Fine Arts curator and local officials brought a Brothers Grimm themed exhibition, "Once Upon a Time..." to the Dane County Regional Airport Terminal. On display for the first time in North America, it also represents the start of visual cultural exchange between Kassel and Dane County. Copies of the artwork remain on display in the Office of the Dane County Board of Supervisors.



2012

Landkreis Kassel invited artists from all its international sister counties to participate in a residency and create temporary public artworks during *documenta* 13, Kassel's long-running international art exhibition. Artist Michael Velliquette represented Dane County. His project, entitled *Power Structure*, was a 12-foot-tall mixed-media sculpture, examining power and responsibility in the built form.



Left: Michael Velliquette (photo credit to Devin Lunsford)
Right: "Power Structure" (courtesy of Michael Velliquette)



2014



Christian Schauderna

Dane County welcomed a German photographer from Kassel, Christian Schauderna, as an Artist-In-Residence at Edgewood College. The Kassel-Dane Task Force selected the theme “Technology and Art” for this project. Schauderna created new works in the Edgewood College Gallery, which were given jointly to the Edgewood



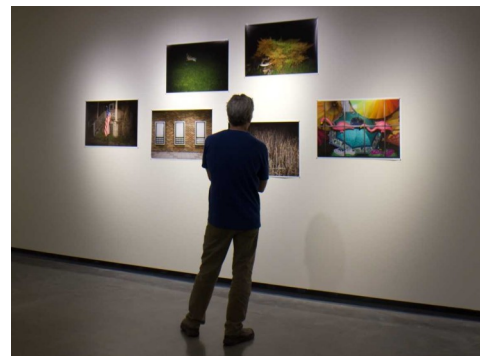
Photos by Christian Schauderna

College and Dane County. His three photos elevate the banal objects of his daily surroundings into formal still lifes.



documenta poster exhibit, Edgewood College, Madison, Wisconsin

In addition to Schauderna’s photographs was a complete set of posters from 1955-2012 from *documenta*, Kassel’s modern art show, donated to Edgewood College.



Photos by Christian Schauderna

A Dane County chamber music ensemble, *con vivo!*, traveled to Kassel to participate in the Kultursommer NordHessen Arts Festival, then performed other concerts in the Kassel area.

2015



con vivo!, chamber music ensemble from Madison and Dane County



con vivo! in Landkreis Kassel

2016

The Edgar Knecht Trio performed three concerts in Dane County, including performances with *con vivo!* and the Madison College Big Band. “A virtuoso of the piano, Edgar Knecht takes on the teutonic folk song with jazz and world music influences, breathing new life into a seemingly lost tradition.”



The Edgar Knecht Trio rehearsing with the Madison College Big Band at the Mitby Theatre, Madison College Truax Campus, Oct. 2016



The Edgar Knecht Trio in front of the men's clothing store Jazzman, Madison

2017

Launched in 1955 to introduce Germans back to the international cultural scene following World War II, *documenta* is now the world's largest modern art presentation and is held once every five years in Kassel, Germany. Dane County artists Brenda Baker and Jennika Bastian attended *documenta* 14 in Kassel and participated in the EUARCA+ arts camp in Sensenstein. Dane County celebrated *documenta* 14 by featuring the only known complete collection of advertising posters from the storied German art show.

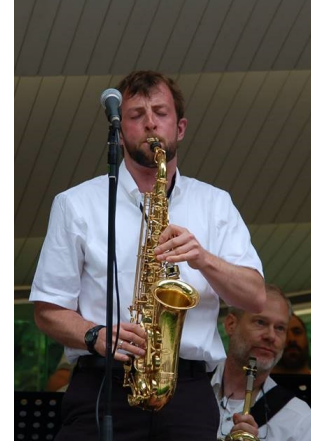


Jennika Bastian paints about fairy tales, a fitting theme in the land of fairytales and origin of the Brothers Grimm, EURACA+ 2017, Kassel



Brenda Baker and her sculpture made with Kassel's most invasive plant species, Japanese Knotwood, at EUARCA + 2017

The Madison College Big Band performed in Kassel with the Edgar Knecht Trio in Rüsselsheim (in Hessen, Wisconsin's sister state in Germany).



Madison College Big Band performing in Bergpark Wilhelmshöhe in Kassel. Left: Lo Marie, Middle: Mandell Mathis, Right: Matt Covert

In May, Kassel-Dane hosted a business and networking event discussing the benefits of German style apprenticeship programs. The event included a presentation by speaker Mario Kratsch, Vice President of the German

2018



Mario Kratsch and Manuel Merkt



Mario Kratsch, German American Chamber of Commerce, presentation on German apprenticeships

American Chamber of Commerce of the Midwest and head of the ICATT Apprenticeship Program. Manuel Merkt, president and COO of Hermle Machine Company LLC, and one of their apprentices then discussed their experiences.

In August, Dane County musicians from the Ancora String Quartet went on their first overseas tour to Germany and performed at various venues, including in Landkreis Kassel. Like Dane County, Kassel is a place with a vibrant arts community and a passion for classical music.

Right: The Ancora String Quartet and mezzo-soprano Melinda Paulsen in Germany



In September, the Edgar Knecht Trio will return to Dane County and perform at the Stoughton Opera House. They will also film a documentary as well as perform with the Madison College Big Band and *con vivo!*

2019



Poster for *documenta 9*, 1992



2007 Dane County delegation to Kassel, opening of Hofgeismar station on the Regio Tram line



Obelisk by artist Olu Oguibe for *documenta 14*, 2017, Kassel



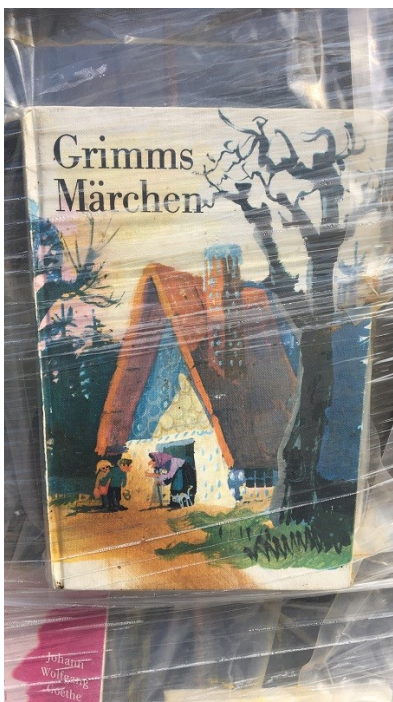
con vivo! at Hercules Monument, Bergpark Wilhelmshöhe, Kassel



Bass player Rolf Denecke, Stoughton Opera House, Sept. 2016



Brenda Baker, Landrat (County Exec.) Uwe Schmidt of Kassel, Jennika Bastian, Harald Kühlborn of Kassel (Public Relations), Dane County Supervisor Chuck Erickson, at EURACA+ 2017, Kassel



A book in the Parthenon of Books,
documenta 14, Kassel



The Edgar Knecht Trio rehearsing, Madison College downtown location, Oct. 2016



Bergpark Wilhelmshöhe, Kassel



Museum Fridericianum, Friedrichplatz Park, Kassel



The Madison College Big Band performing at the April 2017 fundraiser,
Madison College Truax campus

For more information about the Dane County—Kassel Sister County partnership, please contact Chuck Erickson: (608) 212-8753 or chuck@chuckerickson.com