

The Implications of an Aging Population for Dane County Programs and Services



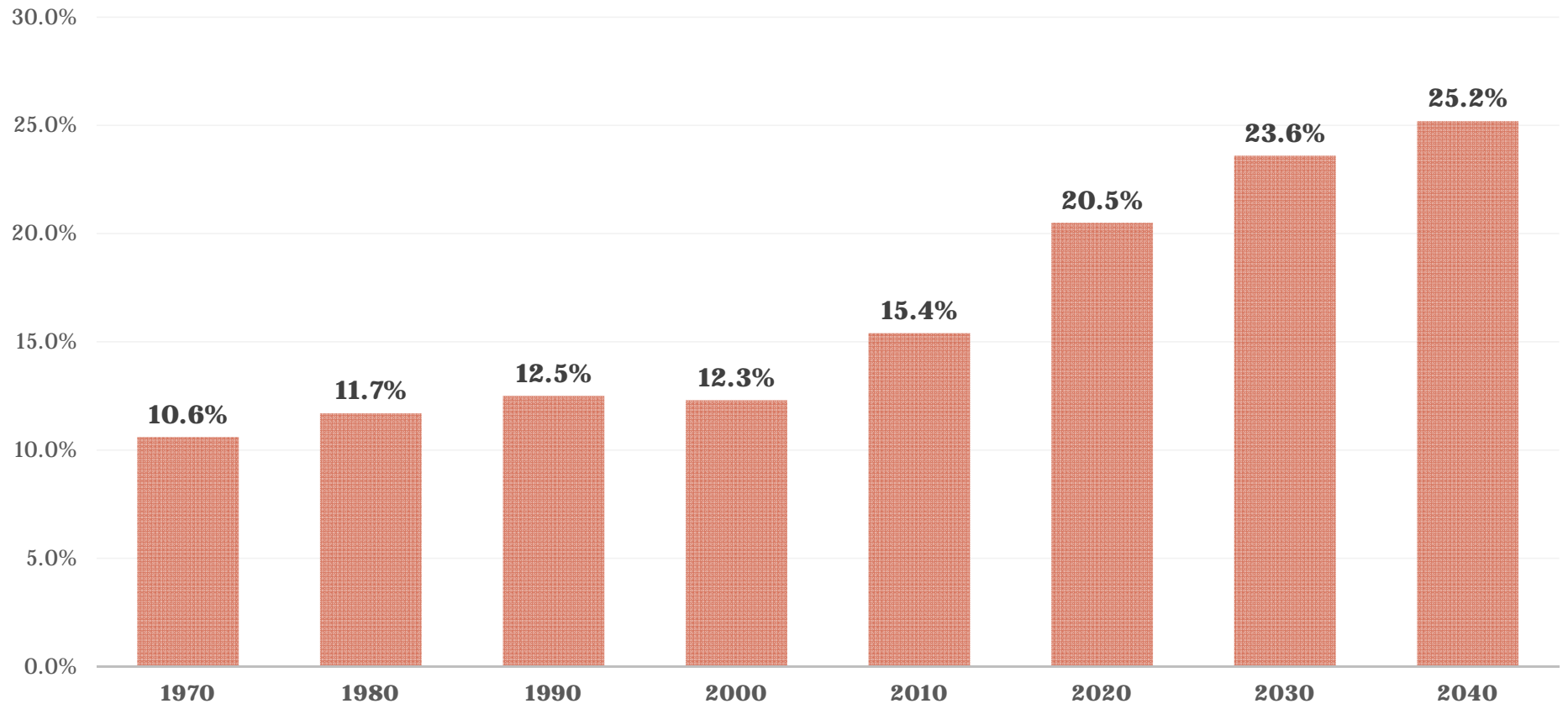
JANUARY 2017
JERRETT JONES

Presentation Roadmap

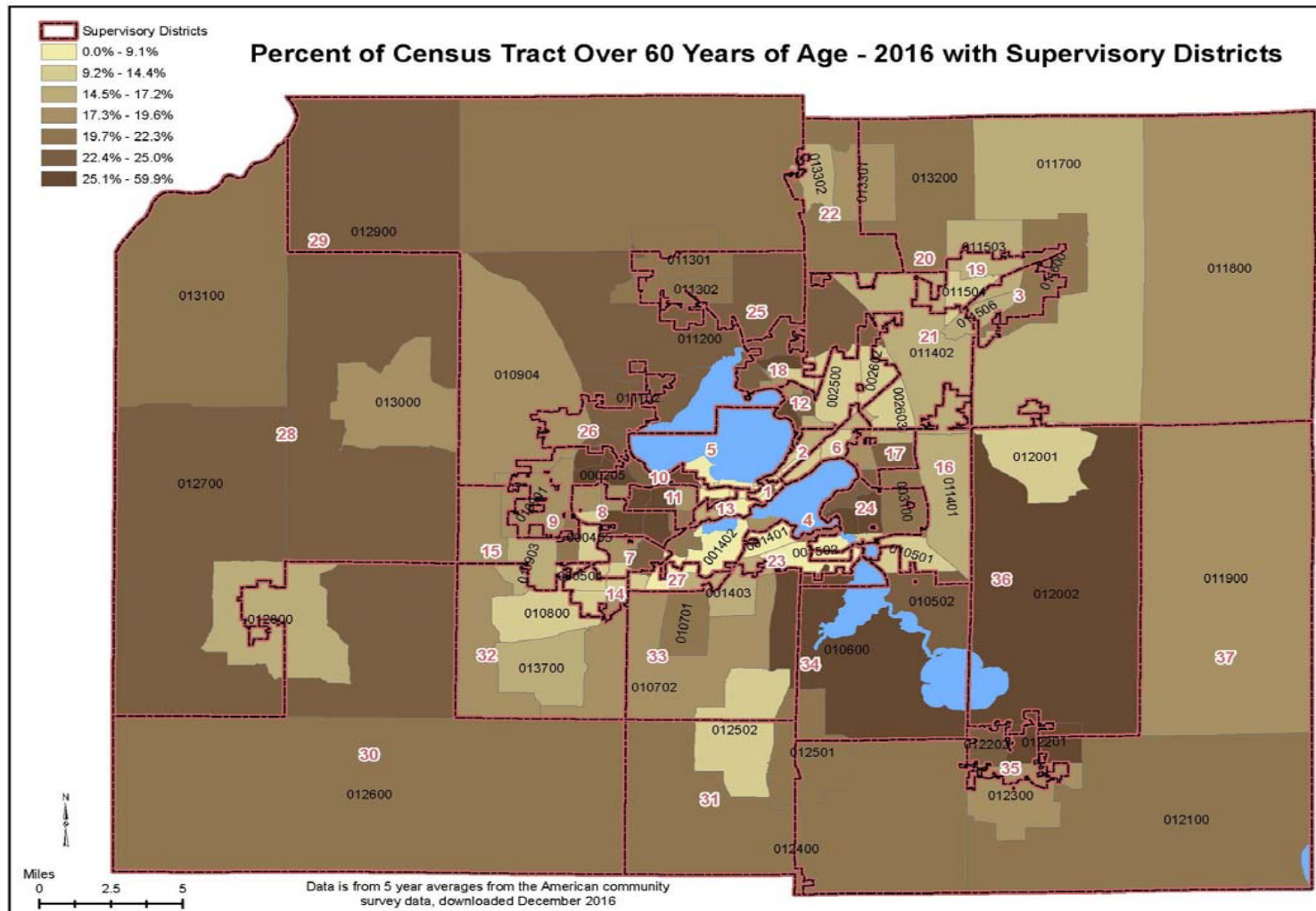


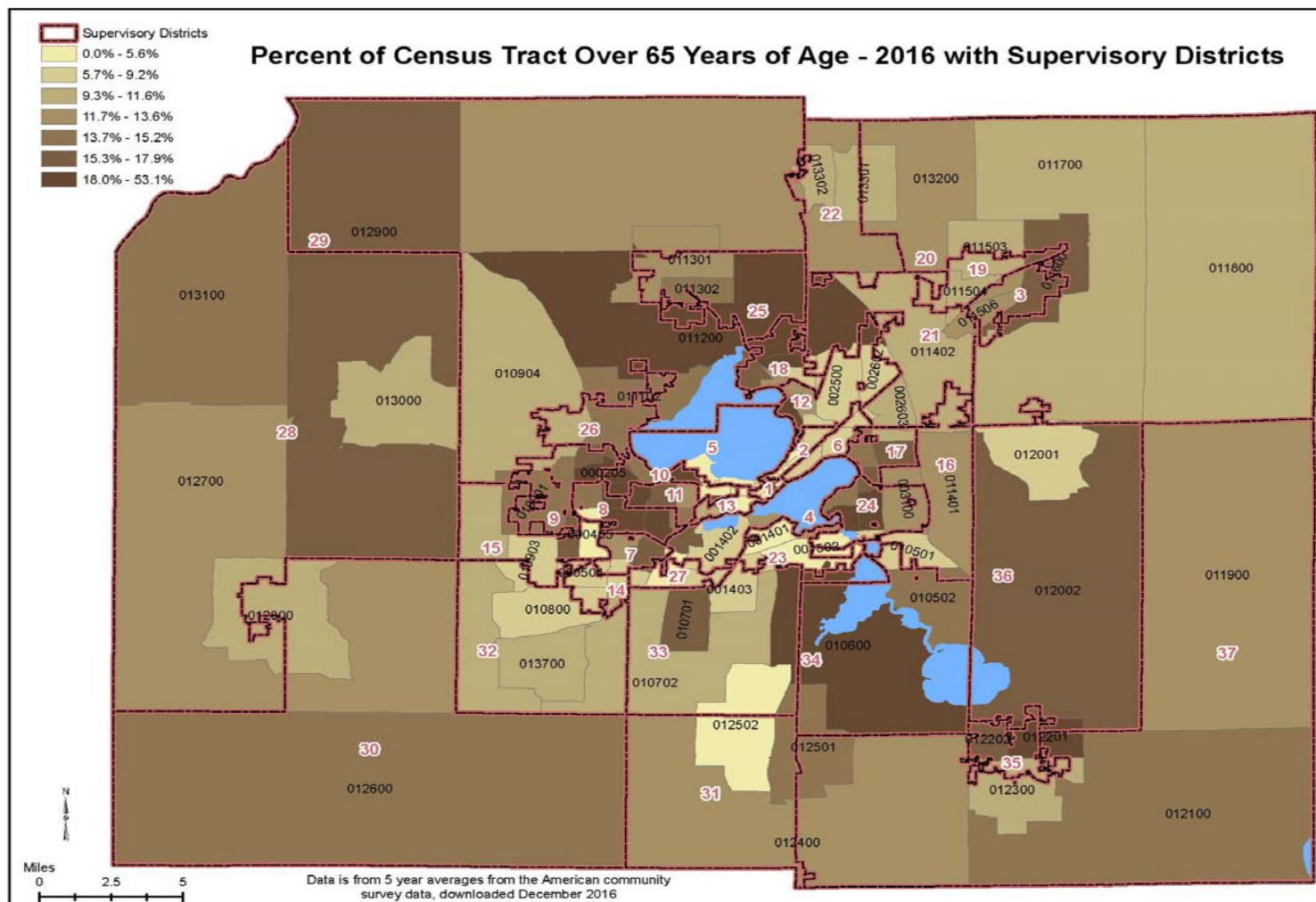
- **Changing age structure**
- **Current challenges in addressing the needs of seniors**
- **Policies and Best Practices**

Ages 60 and Older as Share of Total Population, 1970-2040, Dane County



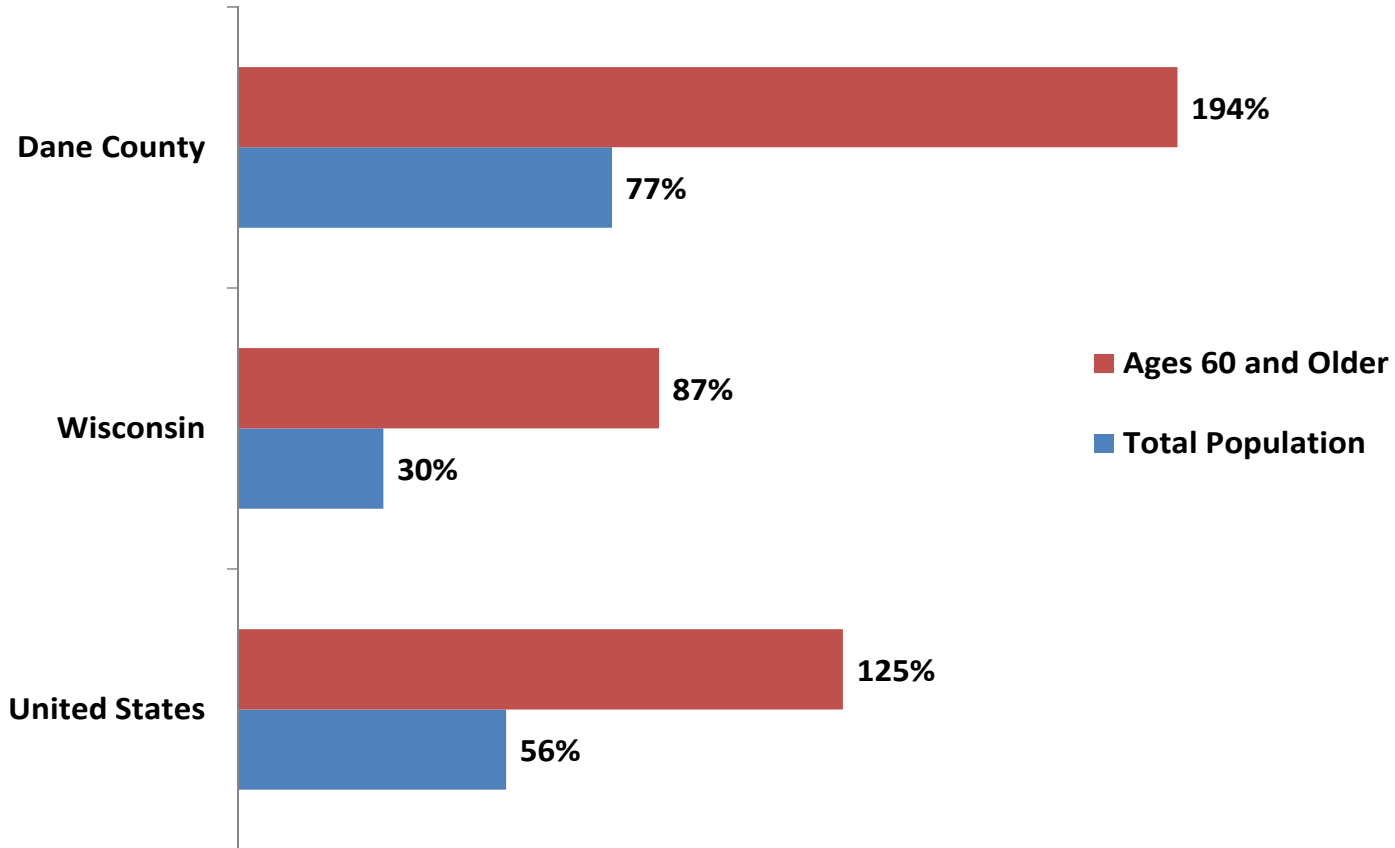
Source: U.S. Census and Wisconsin Department of Administration, Demographic Services Center



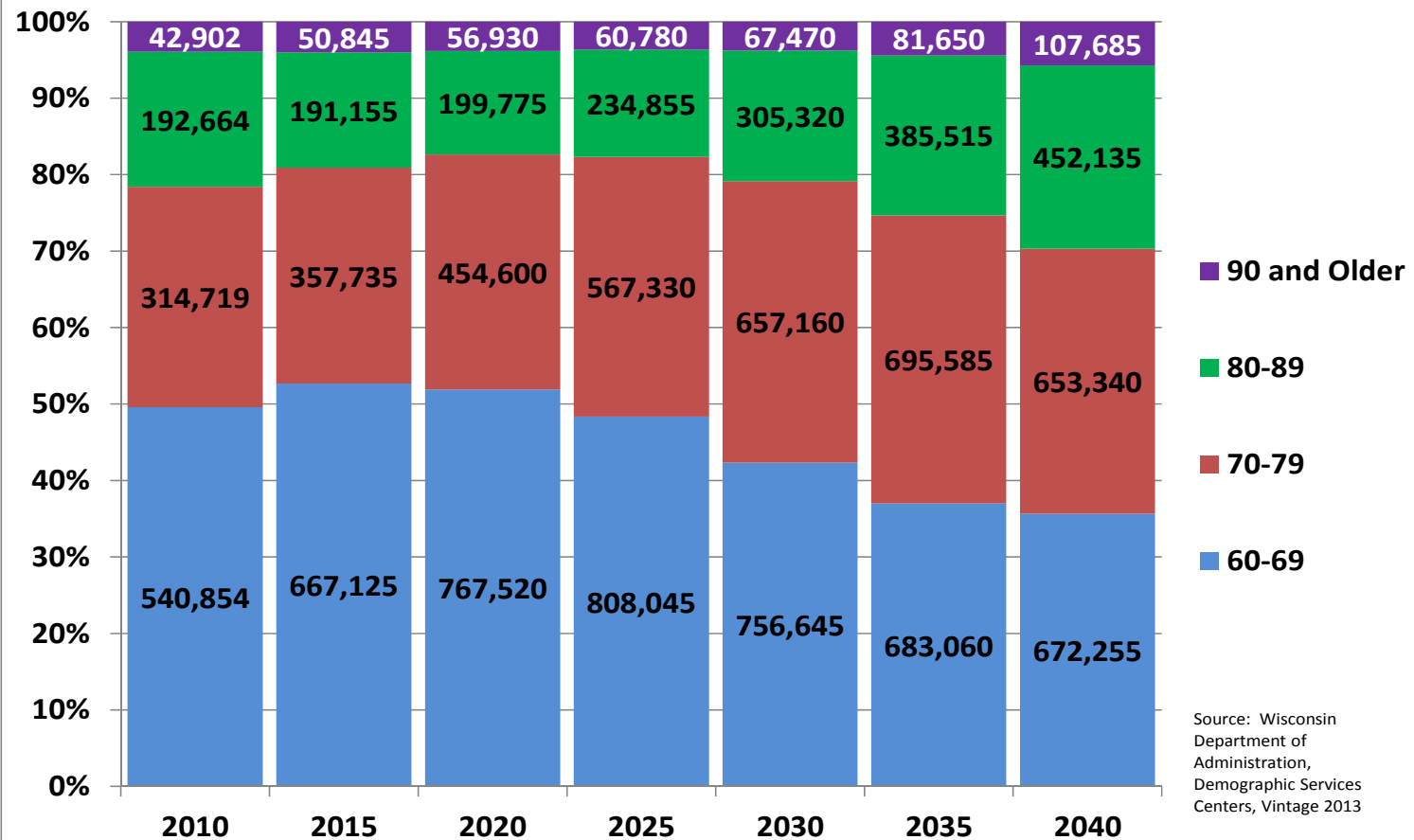


Population Growth Comparison, 1970-2014

Source: U.S. Census, Decennial and Annual Estimates



Projected Age Groups' Population Within the Population Ages 60 and Older, Wisconsin, 2010-2040

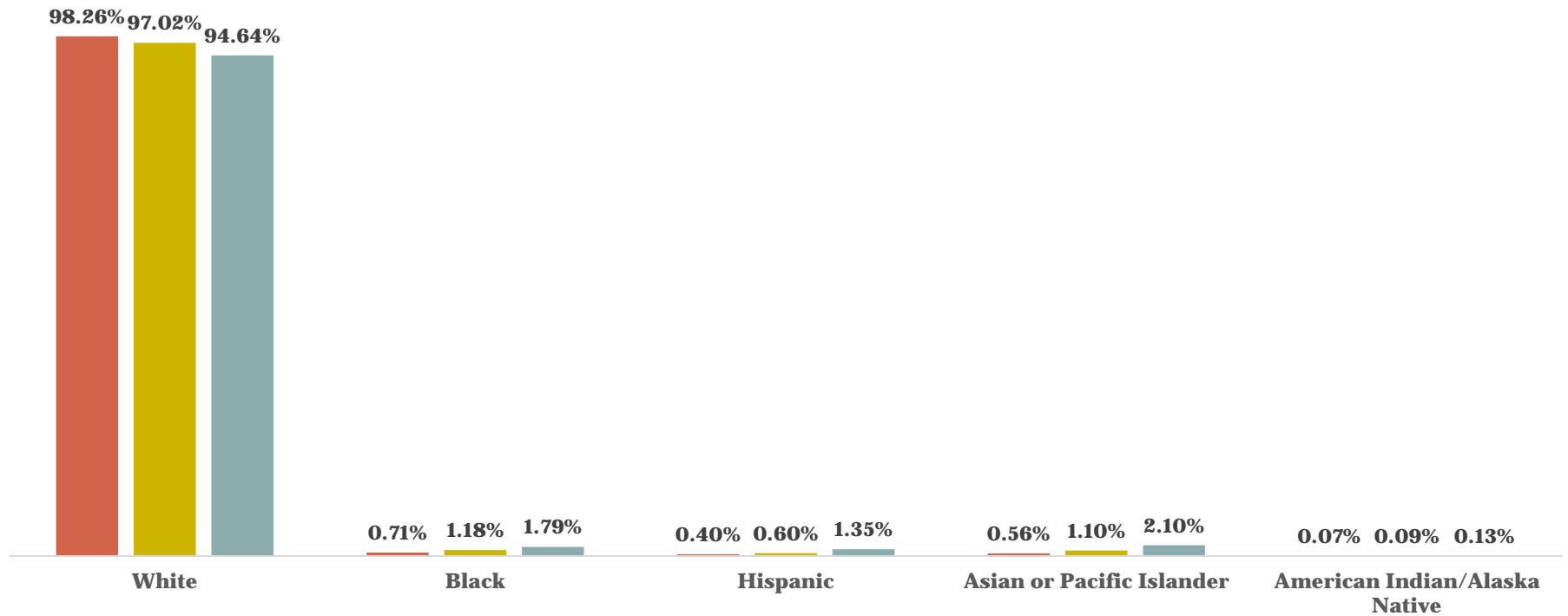


Racial and Ethnic Composition



Population age 65 and over, by race and Hispanic Origin, Dane County

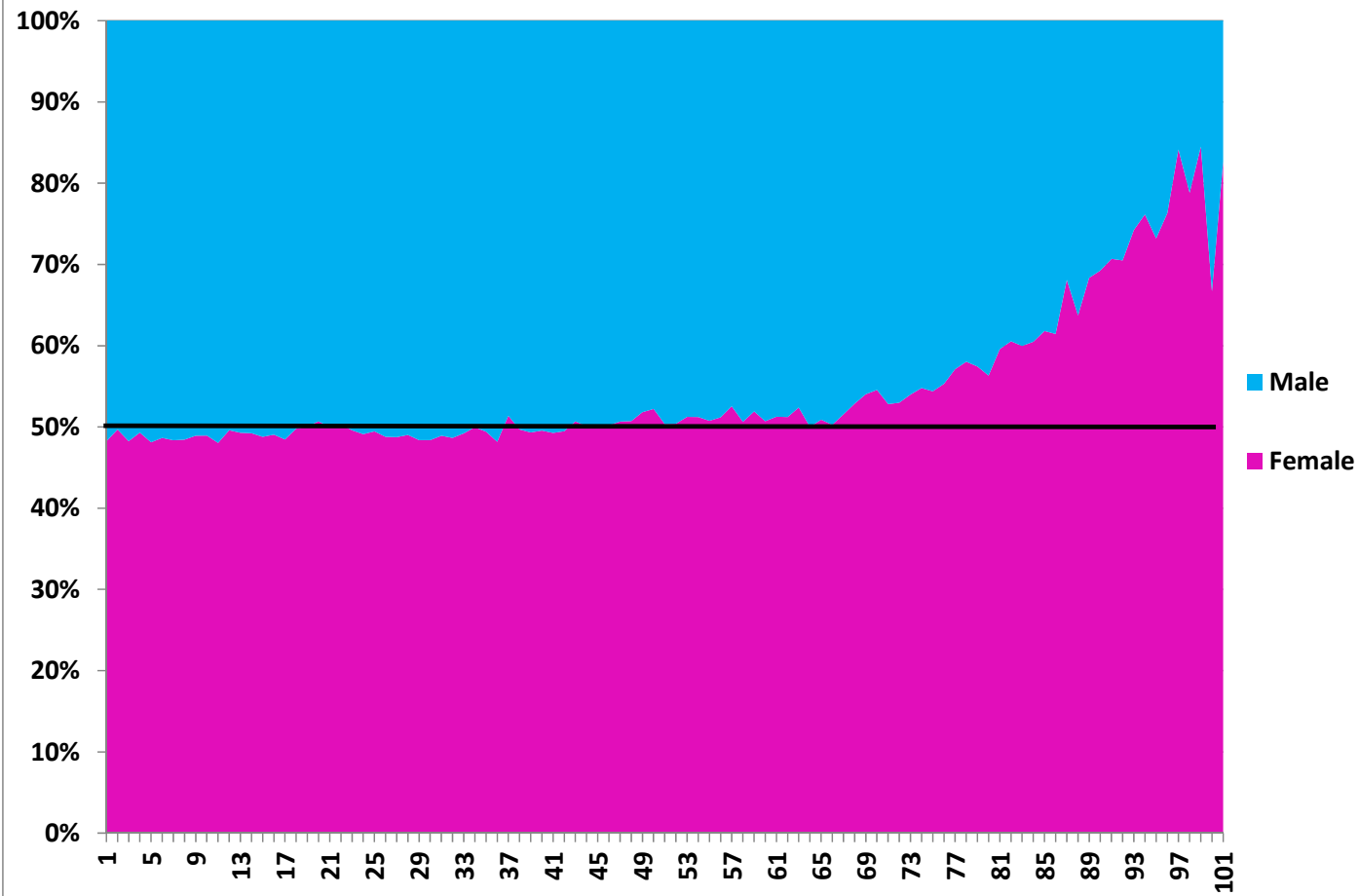
■ 1990 ■ 2000 ■ 2014



Source: U.S. Census Annual Estimates

Gender Share of Single Year of Age in Dane County, 2010

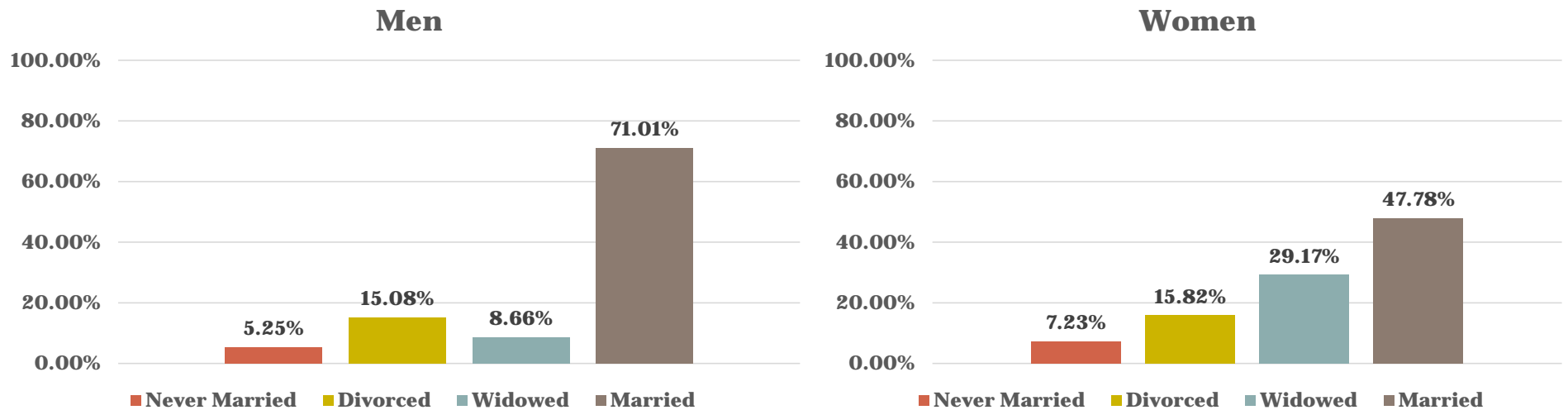
Source: U.S. Census, 2010 Summary File 1, QT-P2



Marital Status



Marital Status of the Population age 65 and over, by Sex, 2015, Dane County

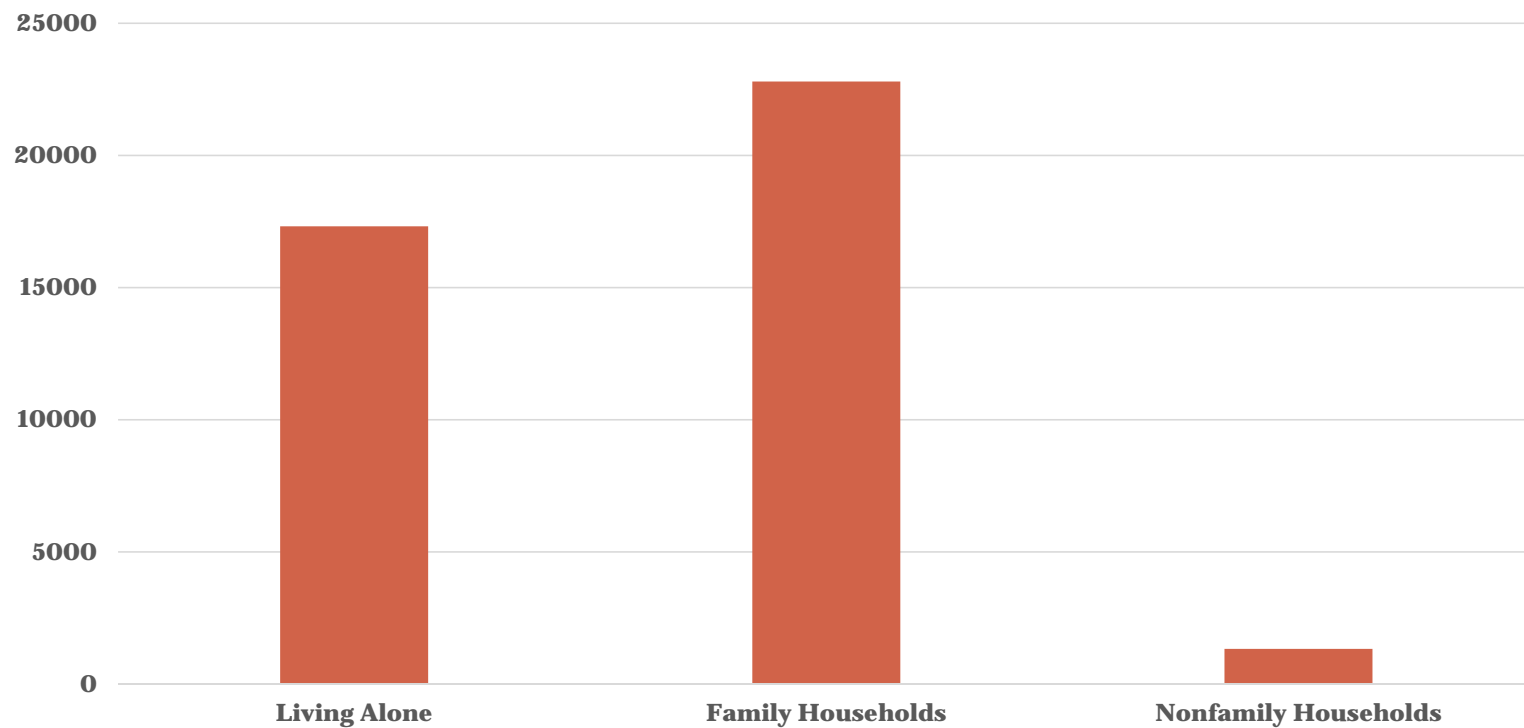


Note: Married includes married, spouse present; married, spouse absent; and separated.
Source: U.S. Census Bureau, American Community Survey, 2015

Living Arrangements



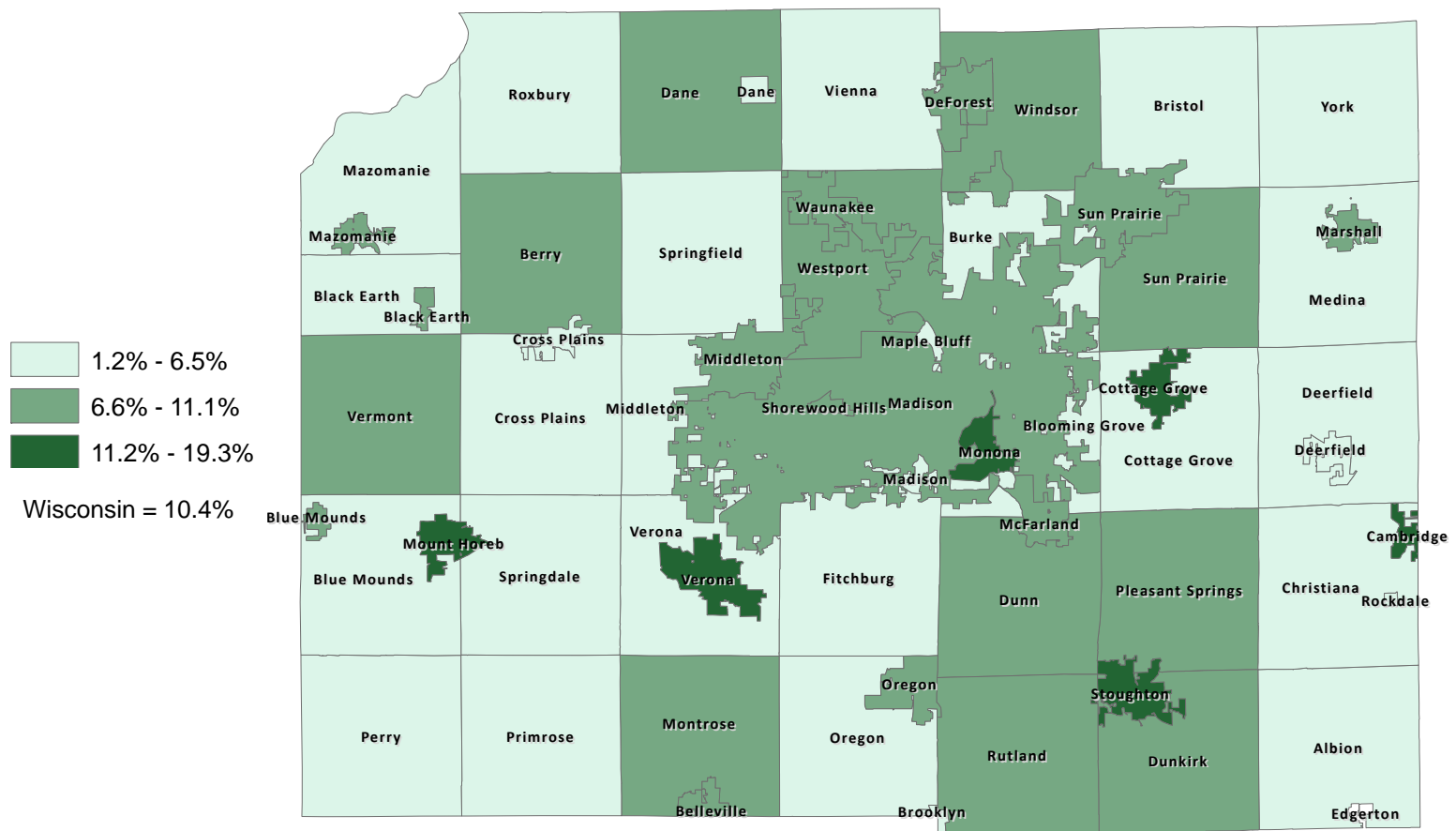
Living Arrangements of the population age 65 and over, Dane County, 2015



Source: U.S. Census Bureau, 2011-2015 American Community Survey

Percent of Total Households with Single Person Ages 65 or Older

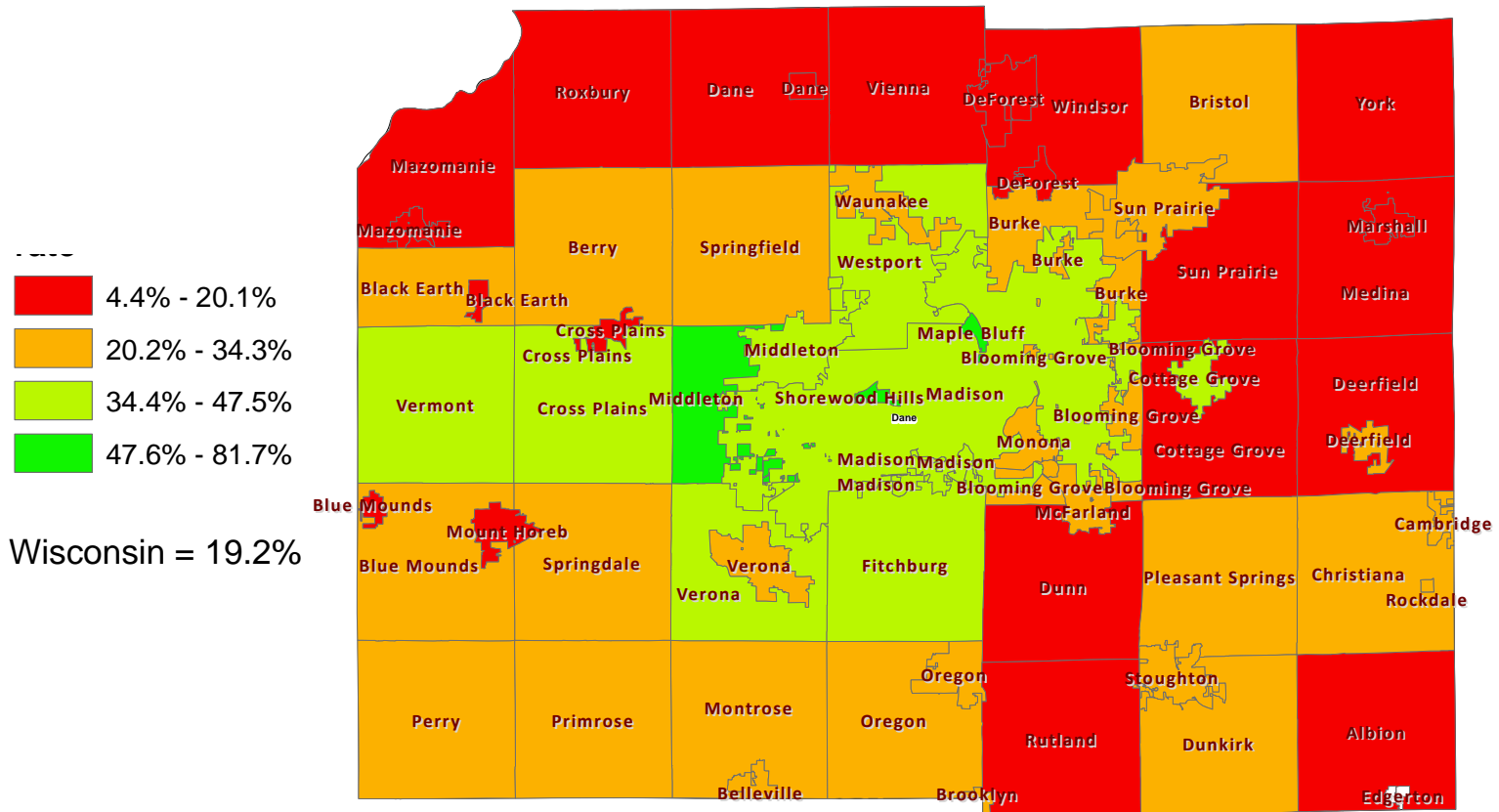
Source: U.S. Census, 2009-13 American Community Survey



Note: Edgerton City data has been withheld due to low Dane County numbers of households.

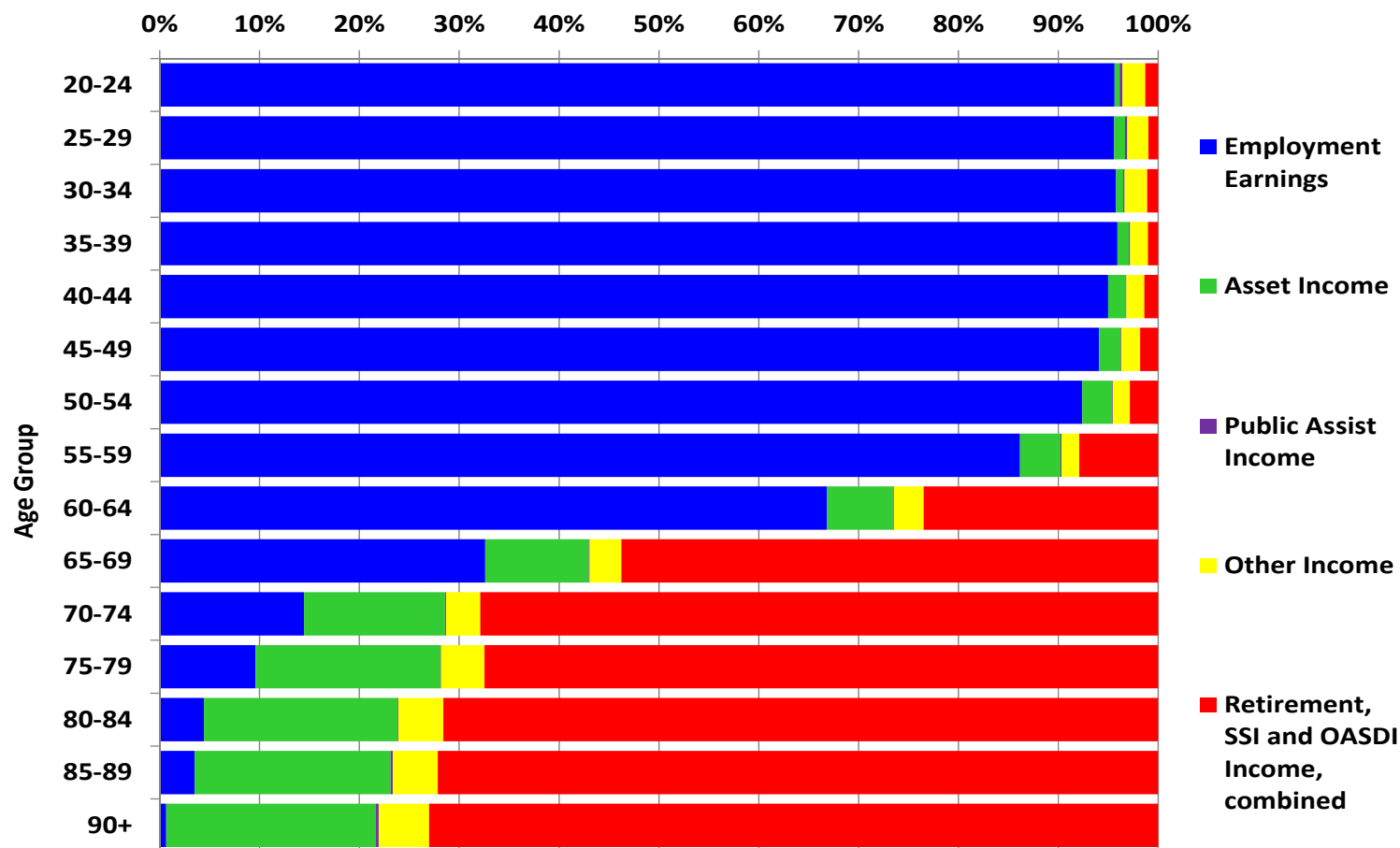
Percent of 65 and Older Population with Bachelor's Degree or Higher, 2008-12

Source: U.S. Census, 2008-12 American Community Survey

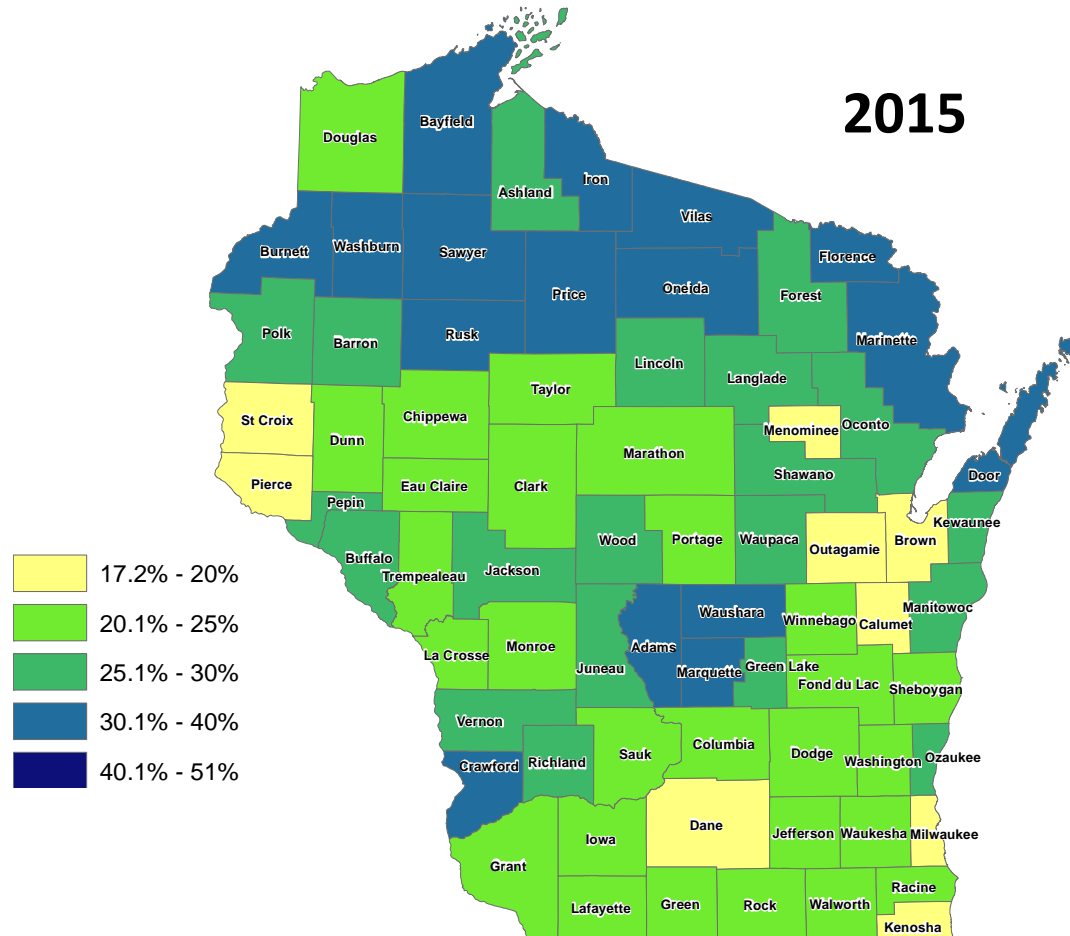


Percent Share of Aggregate Income by Income Type by Age Group in Wisconsin

Source: U.S. Census, 2008-12 ACS, PUMS file

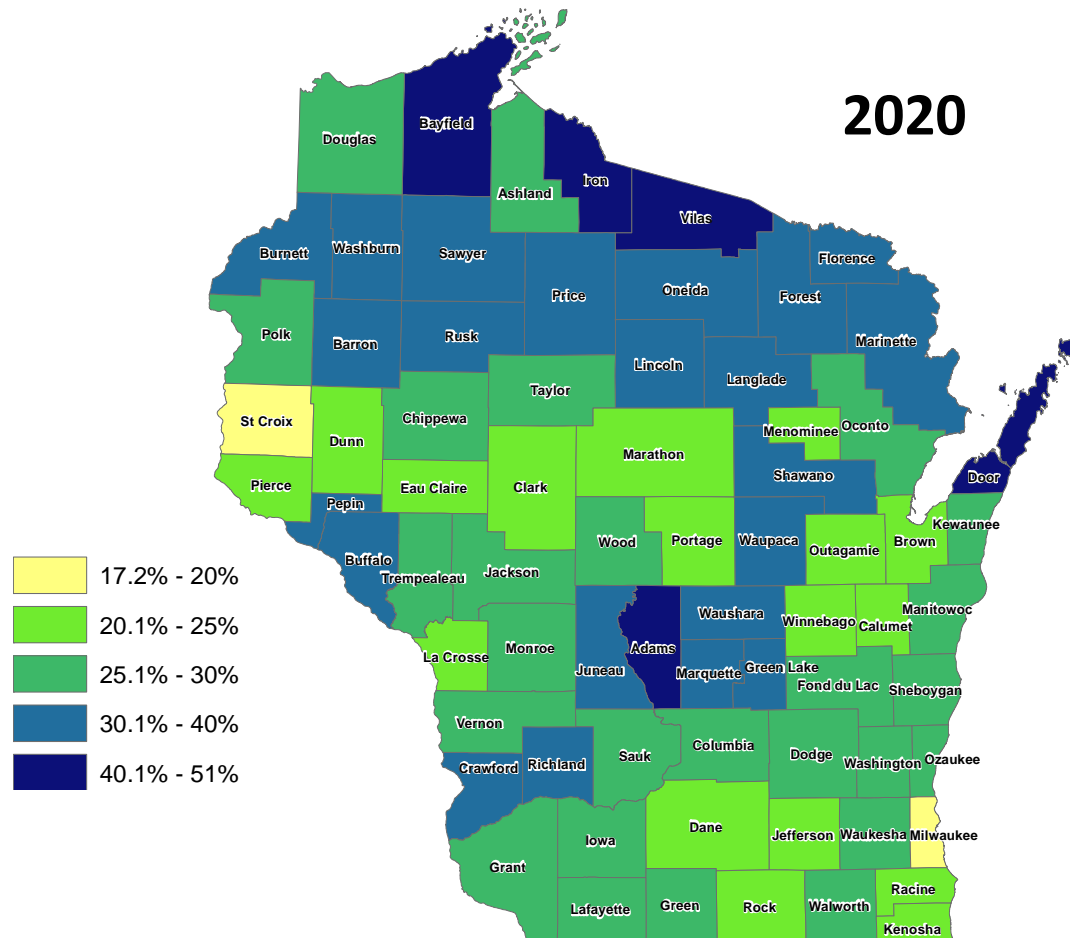


Percent of Projected Population Ages 60 and Older



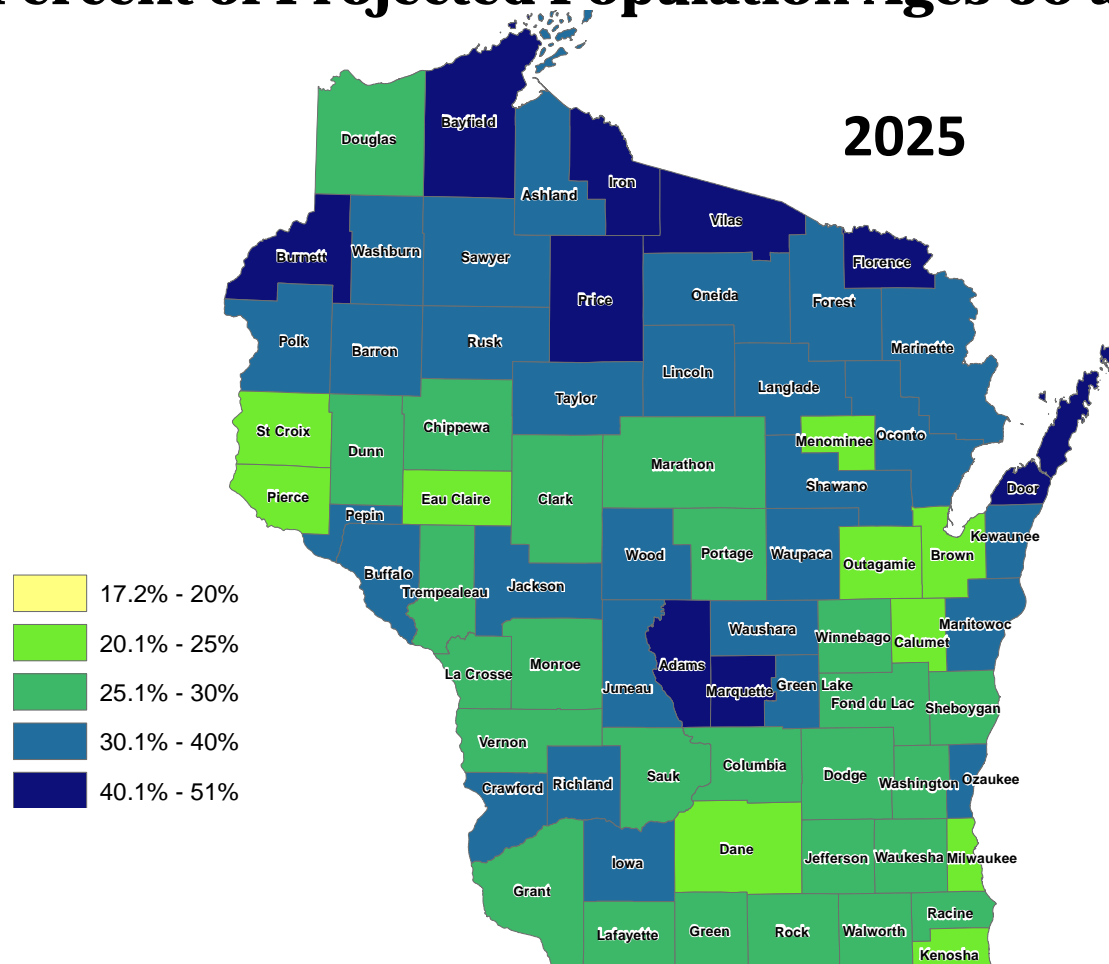
Source: Wisconsin Department of Administration, Demographic Services Center, Vintage 2013 Population Projections

Percent of Projected Population Ages 60 and Older



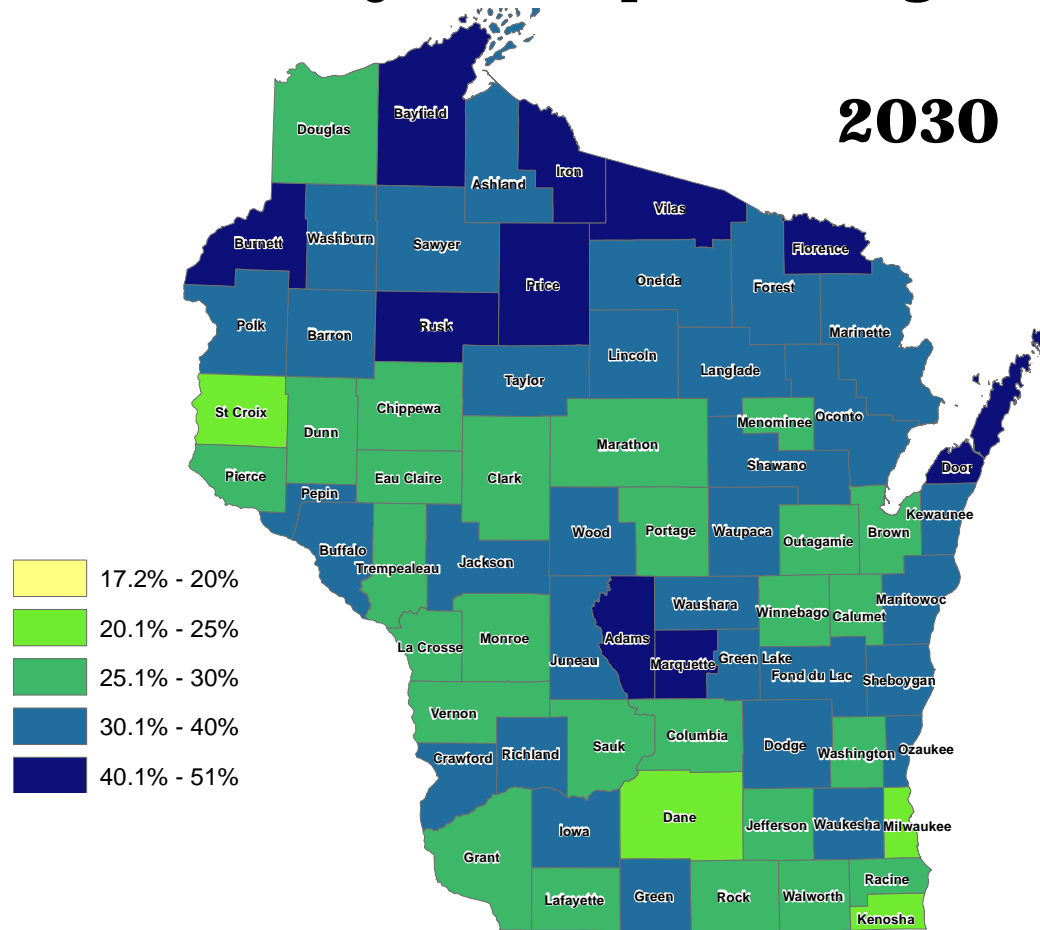
Source: Wisconsin Department of Administration, Demographic Services Center, Vintage 2013 Population Projections

Percent of Projected Population Ages 60 and Older



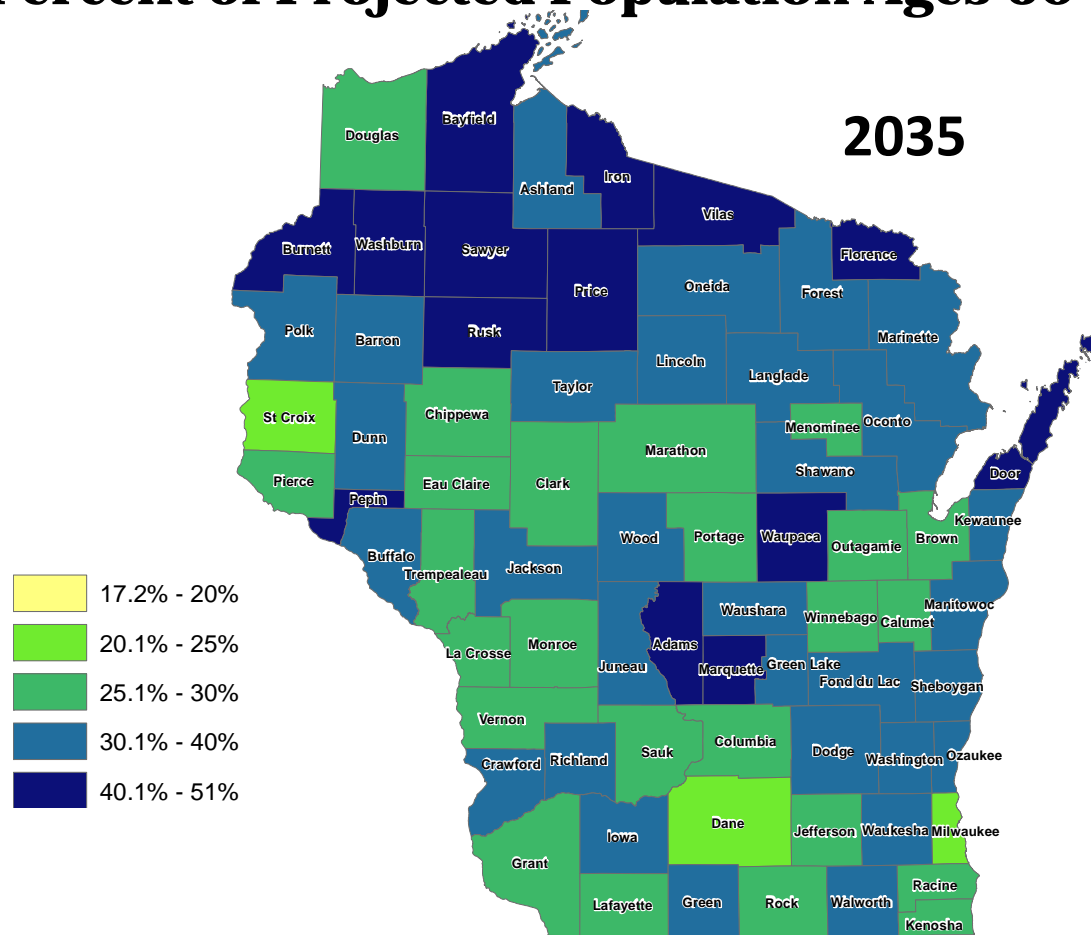
Source: Wisconsin Department of Administration, Demographic Services Center, Vintage 2013 Population Projections

Percent of Projected Population Ages 60 and Older



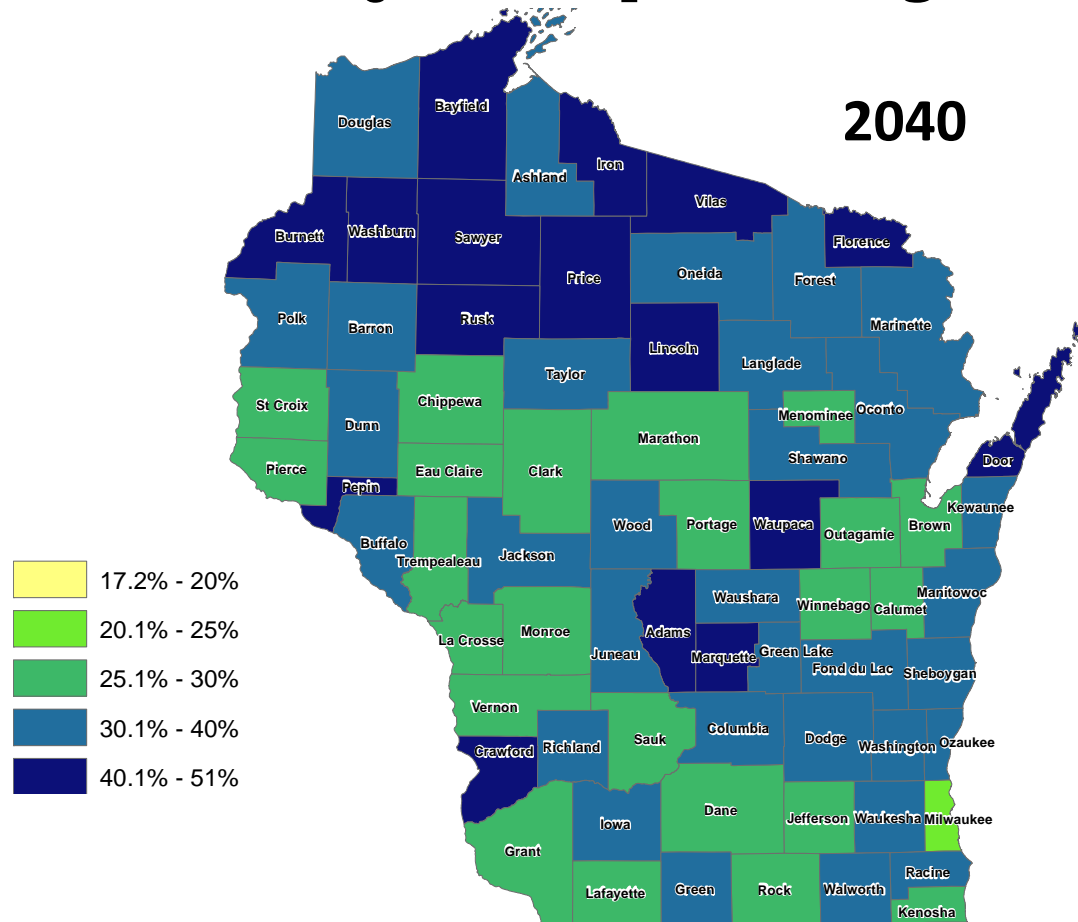
Source: Wisconsin Department of Administration, Demographic Services Center, Vintage 2013 Population Projections

Percent of Projected Population Ages 60 and Older



Source: Wisconsin Department of Administration, Demographic Services Center, Vintage 2013 Population Projections

Percent of Projected Population Ages 60 and Older



Source: Wisconsin Department of Administration, Demographic Services Center, Vintage 2013 Population Projections

Population of Older Citizens in Wisconsin, 2010-2012

Source: Wisconsin Department of Health Services, Wisconsin Demographic Services

29% - 34%

35% - 39%

40% - 44%

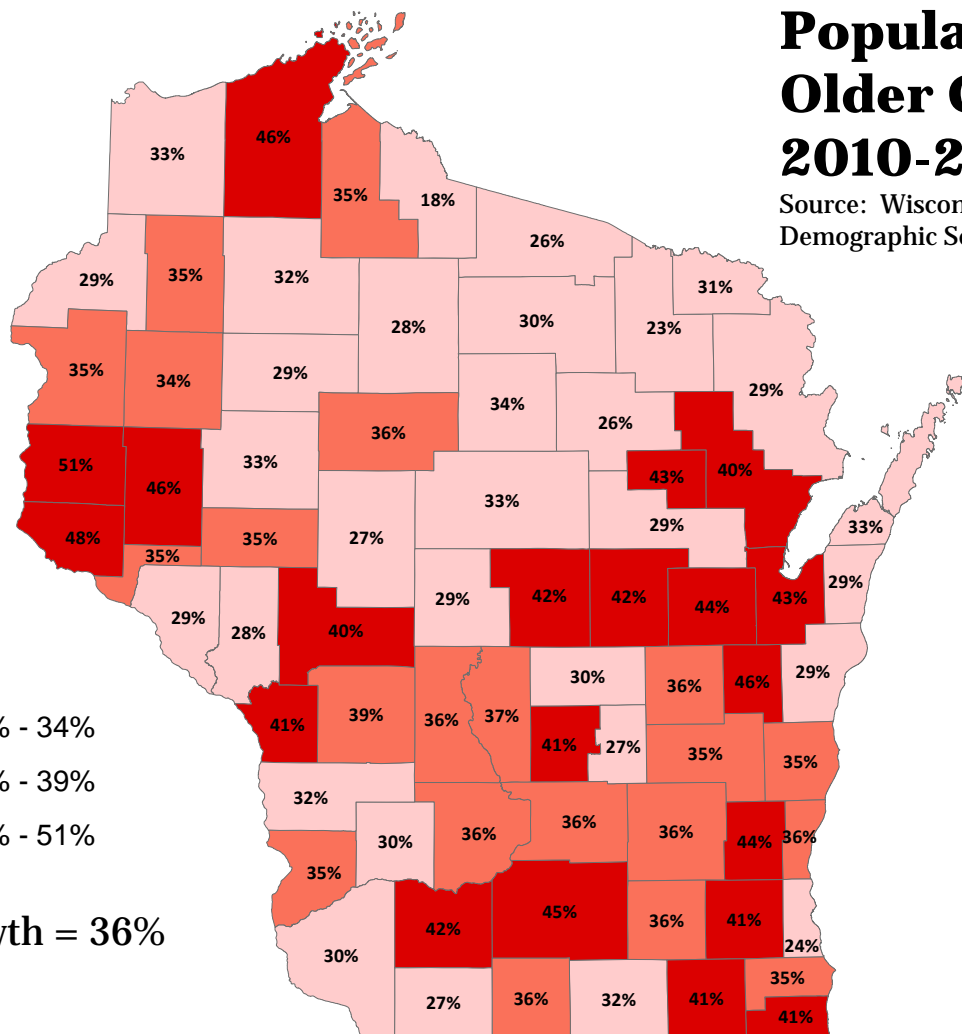
45% - 51%

Birth = 36%

Population Older 65 2010-2012
Source: Wisconsin Demographic Services

30% - 34%
35% - 39%
40% - 44%
45% - 51%

Wisconsin's average = 36%



**Population of Older Citizens
2010-2012**

Source: Wisconsin
Demographic Services

30% - 34%
35% - 39%
40% - 51%

Birth = 36%

Aging Services



- **Aging and Disability Resources Center (ADRC)**
 - To support seniors, adults with disabilities, their families and caregivers by providing useful information, assistance and education on community services and long-term care options and by serving as the single entry point for publicly funded long-term care services.
- **Area Agency on Aging (AAA)**
 - To serve as the primary entity responsible for developing comprehensive, coordinated systems of community-based services for older adults.
 - Any adult age 60 years and older living in Dane County

Area Agency on Aging Contracted Services and Agencies



- Alcohol & Other Drug Services
- Case Management
- Chronic Disease Self-Management
- Cultural Diversity Programs
- Grandparents & Other relatives as Parents Caregiver Program
- Senior Nutrition Program
- Transportation Services
 - RSVP of Dane County
- Volunteer Programs



Senior Dining Centers

Home Delivered Meals

Senior Farmers' Market
Nutrition Program

Restaurants



Nutrition Programs for Older Adults

Policy Challenges with Nutrition Programs



- **Barriers to participation**
- **Transportation**
- **Stigma**
- **Institutional image of nutrition programs**
- **Cultural differences in taste among minority populations**



RSVP of Dane County

Retired and Senior Volunteer
Program (RSVP) Driver Escort
Service

Innovation

TRIP (Transportation Reimbursement and Information Program) was the outcome of a collaborative partnership between the Independent Living Partnership, sponsor of TRIP, the local Area Agency on Aging, and the county department of transportation



Transportation Programs for Older Adults



Age to Age Kindergarten

Coffeyville, Kansas

A local school district and a nursing home work together to provide a unique intergenerational kindergarten program

Rent-a-Kid

York County, Pennsylvania

Students build relationships with older adults while earning extra cash

The Nest Egg Thrift Store

Madison, Virginia

Upscale thrift shop subsidize assisted living for low-income



Innovative Programs